

STEM is CTE

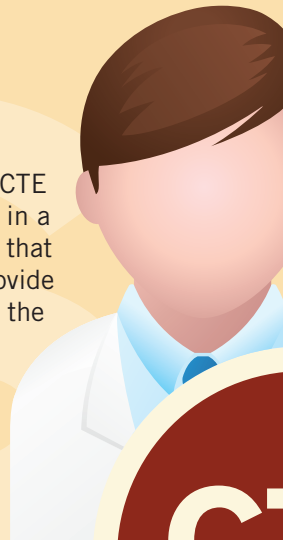
50% of all Science, Technology, Engineering and Mathematics (STEM) jobs are open to workers with less than a bachelor's degree.

30% of today's STEM-intensive jobs are in blue collar fields.

CTE is ...

SCIENCE

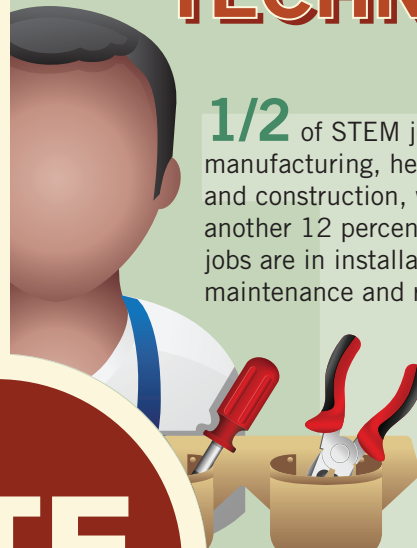
61% of CTE students interested in a science career report that their CTE courses provide them with skills for the workforce.



CTE is ...

TECHNOLOGY

1/2 of STEM jobs are in manufacturing, health care and construction, while another 12 percent of STEM jobs are in installation, maintenance and repair.



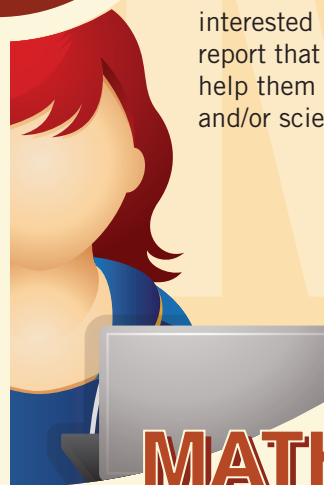
CTE

Career and Technical Education

18% job growth is projected for environmental engineering technicians by 2022. These jobs typically require an associate's degree and pay more than \$45,000 per year.



45% of CTE students interested in a math career report that their CTE courses help them attain higher math and/or science skills.



CTE is ...

ENGINEERING

CTE is ...

MATHEMATICS

Association for Career and Technical Education
ACTE

1410 King Street, Alexandria, VA 22314
Phone: 800-826-9972 • Fax: 703-683-7424

www.acteonline.org • Connecting Education and Careers

References for this research can be found at www.acteonline.org or by contacting cimperatore@acteonline.org.